

# STELLAR IT Park



**VACANCY POSITION MARCH 2020**

**STELLAR IT PARK, C-25, SECTOR 62, NOIDA**

# ABOUT STELLAR IT PARK



- 5.2 Acres Plot
- Built up Area 6.30 Lac sq.ft in two Towers
- Centrally Air Conditioned
- 100 % Power Backup
- 24x7 Surveillance
- Double basement for parking
- Business Center Conference
- Facilities

## Integrated Facilities

Cafeteria | Food Court | Branches of Bank of Baroda | ICICI | HDFC |  
IndusInd | Yes Bank | Kotak Mahindra | CCBL | Syndicate Bank

Beauty Parlor | Fine Dine restaurants- Stellar Binge | Barbeque Nation | CultFit Gym

- ✓ In-house, Professionally-Run Facility Management
- ✓ Green & Efficient Building Design
- ✓ Tenant Management Services
- ✓ Free Space Planning
- ✓ Complete In-house Office Interior Solutions
- ✓ In-house Construction Team/Architecture service

# TOWER A

**GROUND FLOOR, OFFICE NO. 8, 9 & 10, SUPER AREA:5812 Sq.ft.**



**68 Work Station,3 Manager Cabin,1 Conference Room(10 Seater), 1 Meeting Room (6 Seater), Server Room, Store Room, Pantry, 1 Reception**

# TOWER A

## WARMSHELL OFFICES (TOWER-A)

FLOOR	OFFICE NO.	AREA
2nd Floor	06	6375 Sq.ft
6th Floor	20	2175 Sq.ft

Office No-6 is fully furnished and Office No-20 are warm shell can be offered as fully-furnished basis.



# TOWER B

(RETAIL/COMMERCIAL AREAS)

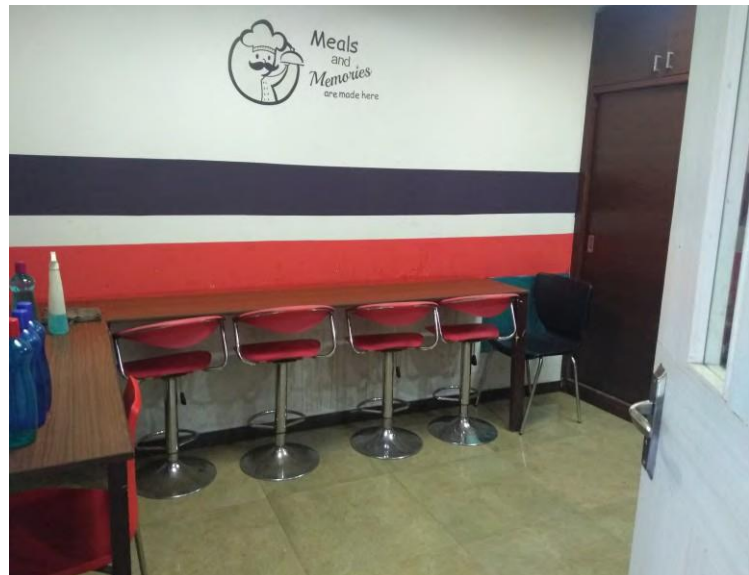
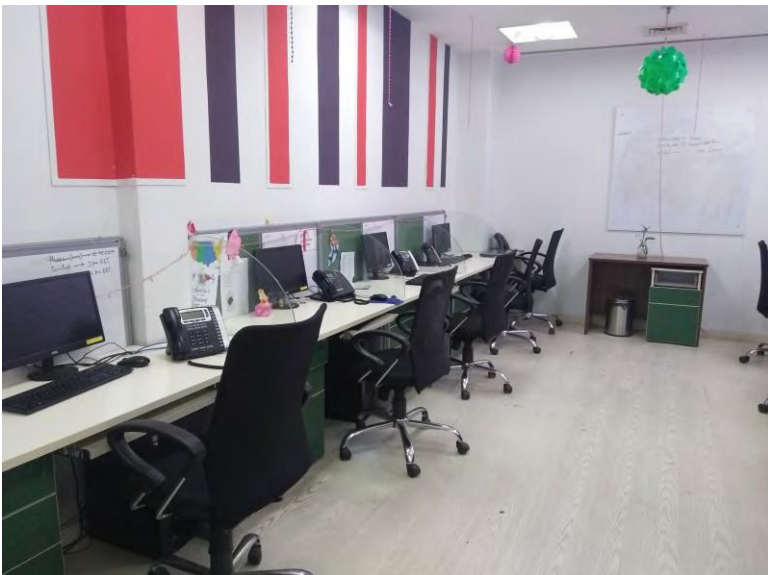
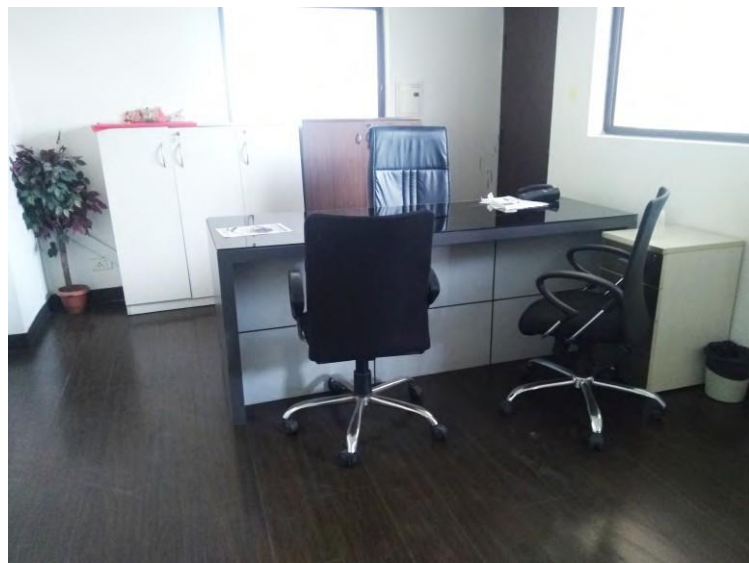


## SPACE FOR FOOD OUTLET

LOCATION	UNIT NO.	AREA IN SQ.FT.
UPPER BASEMENT	KITCHEN NO.03	867
UPPER BASEMENT	KITCHEN NO.04	867
UPPER BASEMENT	KITCHEN NO.05	867
UPPER BASEMENT	KITCHEN NO.06	867
GROUND FLOOR	UNIT NO.14/15	1140

# TOWER B

**SECOND FLOOR, OFFICE NO. 4A,4B & 5, SUPER AREA:3695 sq.ft.**

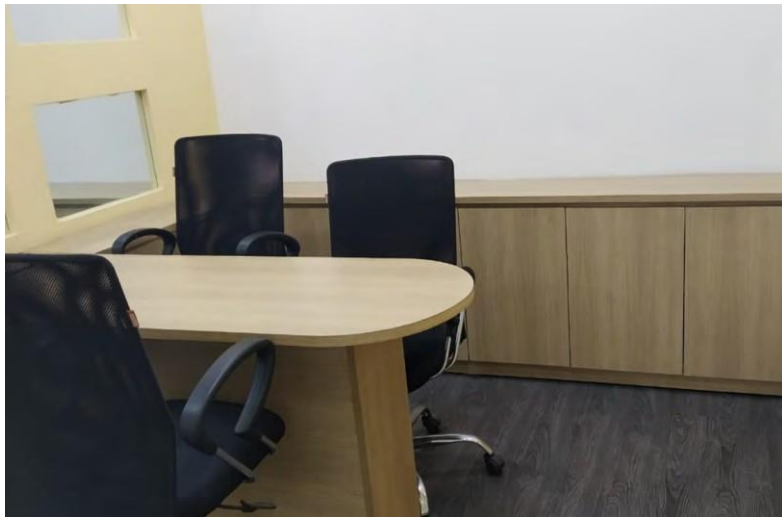
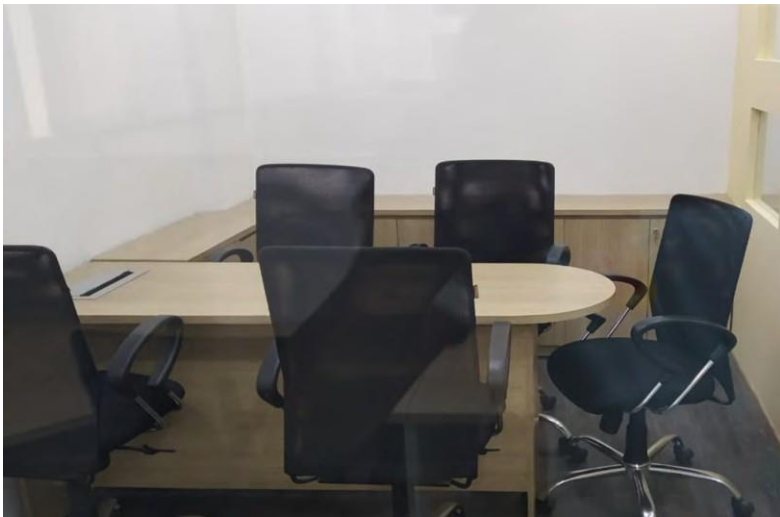


**51 Work Station,1 Manager Cabin,1 Conference Room(8 Seater),  
1 Conference Room (6 Seater),Server Room, Dry Pantry**



# TOWER B

**THIRD FLOOR, OFFICE NO.10, SUPER AREA:2190 Sq.ft.**



**15 Workstation, 03 Manager cabin, 1 Dry pantry, 02 Meeting room, 1 Conference room(8 Seater), 01 Server Room, 01 Reception**



# TOWER B

**FOURTH FLOOR, OFFICE NO. 1, SUPER AREA: 2618 sq.ft.**



**Work Station 18, 1 Conference Room (10 Seater) , 1 Server Room, Dry  
Pantry, Reception, 1 Meeting Room (4 Seater), 1 Store Room**

# TOWER B

**FOURTH FLOOR, OFFICE NO. 4, SUPER AREA: 1934 sq.ft.**



**Work Station 25, 1 Manager Cabin , 1 Server Room, Open Pantry,  
Reception, 1 Meeting Room (4 Seater), 1 Store Room**

## TOWER B

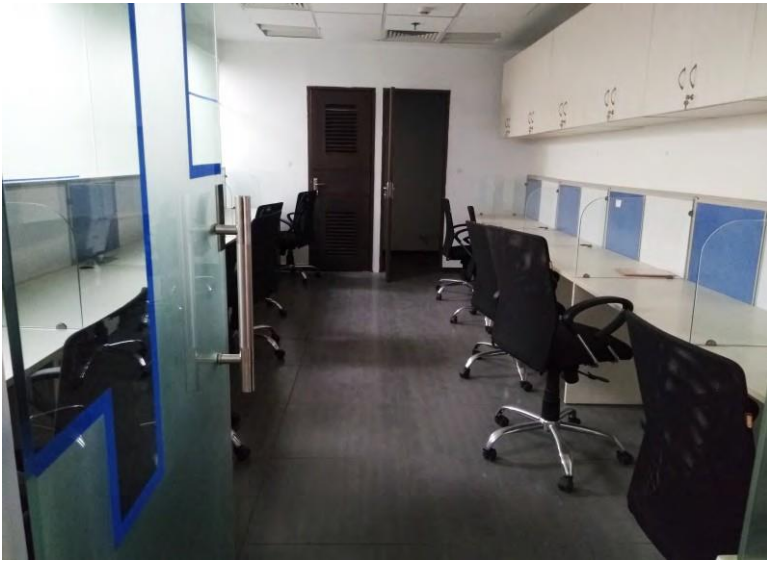
### WARMSHELL OFFICES (TOWER-B)

FLOOR	OFFICE NO.	AREA
4th Floor	5	1761 Sq.ft
4th Floor	6	1761 Sq.ft
Total		3522 Sq.ft

THESE ARE CONTIGUOUS OFFICES  
CAN ALSO BE OFFERED ON FULLY FURNISHED BASIS

# TOWER B

**FOURTH FLOOR, OFFICE NO. 11, SUPER AREA:1325 sq.ft.**



**Work Station-16, Manager Cabin-1, 6 Seater Conference Room-1, Reception, Dry Pantry, Storage, Server Room.**



# TOWER B

**FIFTH FLOOR, OFFICE NO. 6, SUPER AREA:1761 sq.ft.**



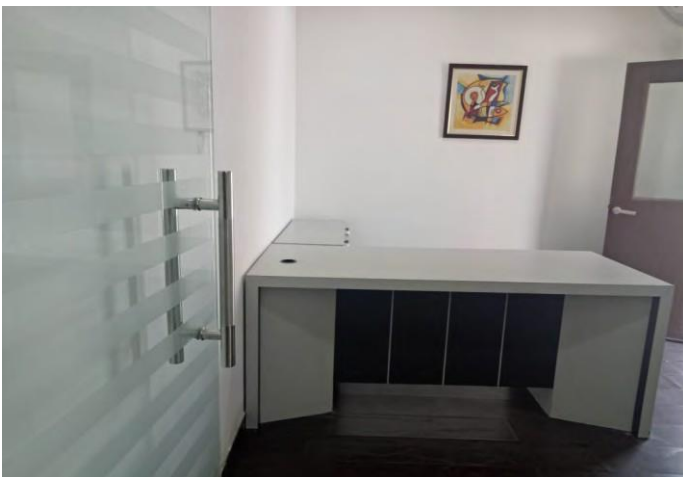
**Work Station-25, Manager Cabin-2, 1 Director Cabin 1  
Meeting Room ( 4 Seater), Reception, Dry Pantry,  
Server Room, Reception.**

# TOWER B

## 6th FLOOR

### (BUSINESS CENTER)

Cabin No- 104	10 Seater
Cabin No- 108	2 Seater
Cabin No- 109/110	Work Station-11, Manager cabin-1
Cabin No- 111/112	Work Station-04, Manager cabin-1
Cabin No- 119	Work Station-04, Manager cabin-1



The background of the slide features abstract blue geometric shapes in the top-left and bottom-right corners, set against a white background.

## Contact for Leasing

Ms. Varsha Kapoor

Mobile: 9899222055

Email: [varsha.kapoor@infostellar.com](mailto:varsha.kapoor@infostellar.com)