

3 BHK/ 4 BHK PREMIUM APARTMENTS & PENTHOUSES



STELLAR MI
LEGACY

EXCLUSIVE COMMUNITY
EXCLUSIVE FACILITIES

SECTOR ZETA-1, GREATER NOIDA

EXCLUSIVE FACILITIES



ENJOY THE CLASSIC COMFORTS OF LIFE

For the few who enjoy the finer things in life, life is not about compromises. They are rarely satisfied with anything but the best.

CLUB HOUSE FACILITIES

Community Hall Multipurpose | Swimming Pool | Gymnasium | Table Tennis | Billiards Room | Library | Retail store | Card Room | Children's Play Area | Beauty Parlour

Piped Gas Connection | High Speed Elevators | Surface Parking spots | 100% Power backup | CCTV Security





A TRIBUTE TO FINE LIVING

LOCATION

GH-01A,sector Zeta-I , Greater Noida



PRODUCT MIX

Large 3BHK/4BHK Apartments & Penthouses



SIZES

3BHK-2227 Sq.ft, 4BHK-2738 Sq.ft



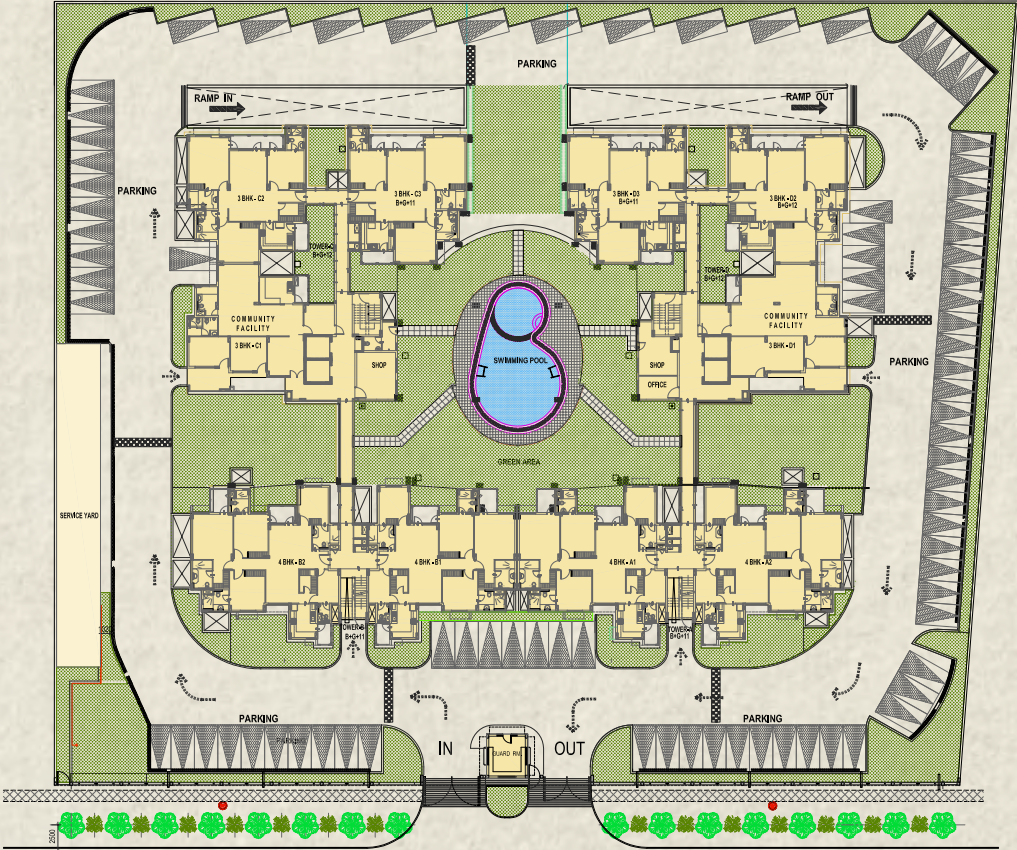
PROJECT HIGHLIGHTS

The project overlooks a green belt and is located near a 130 meter wide road with Purvanchal heights as our neighbor .The plot is within 1KM of Delhi Public School & 2KM from WIPRO Development Center.

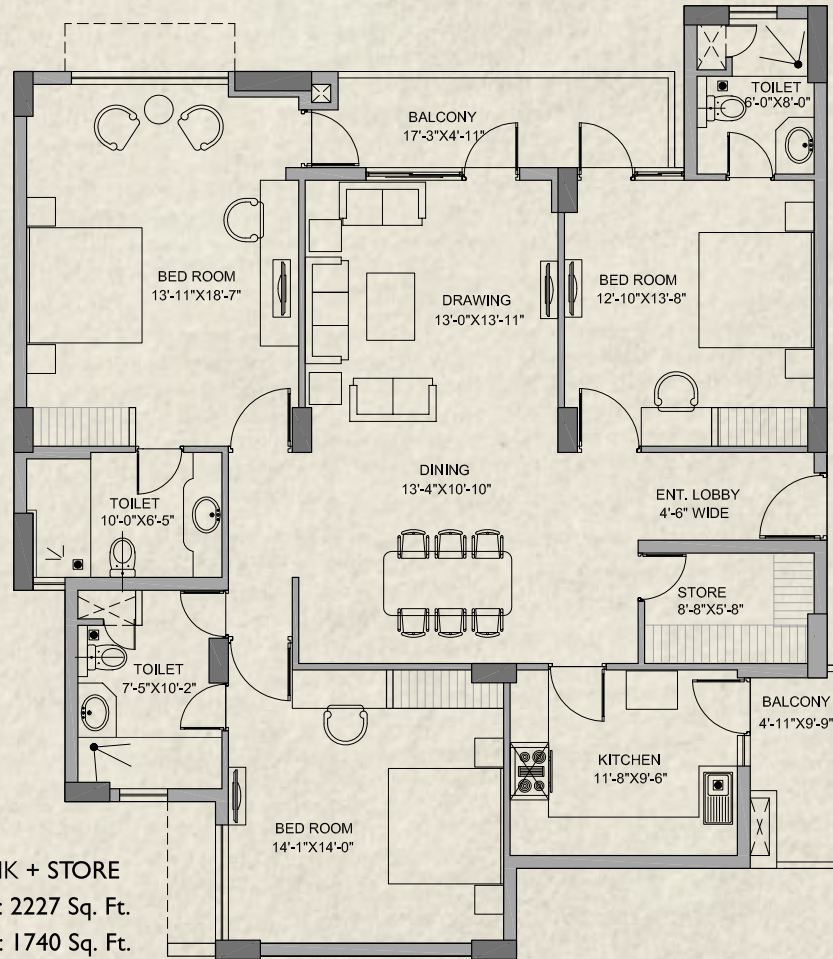


There are only 118 large 3BHK and 4BHK apartments & penthouses in the complex providing an exclusive community.

EXCLUSIVE COMMUNITY

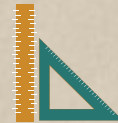
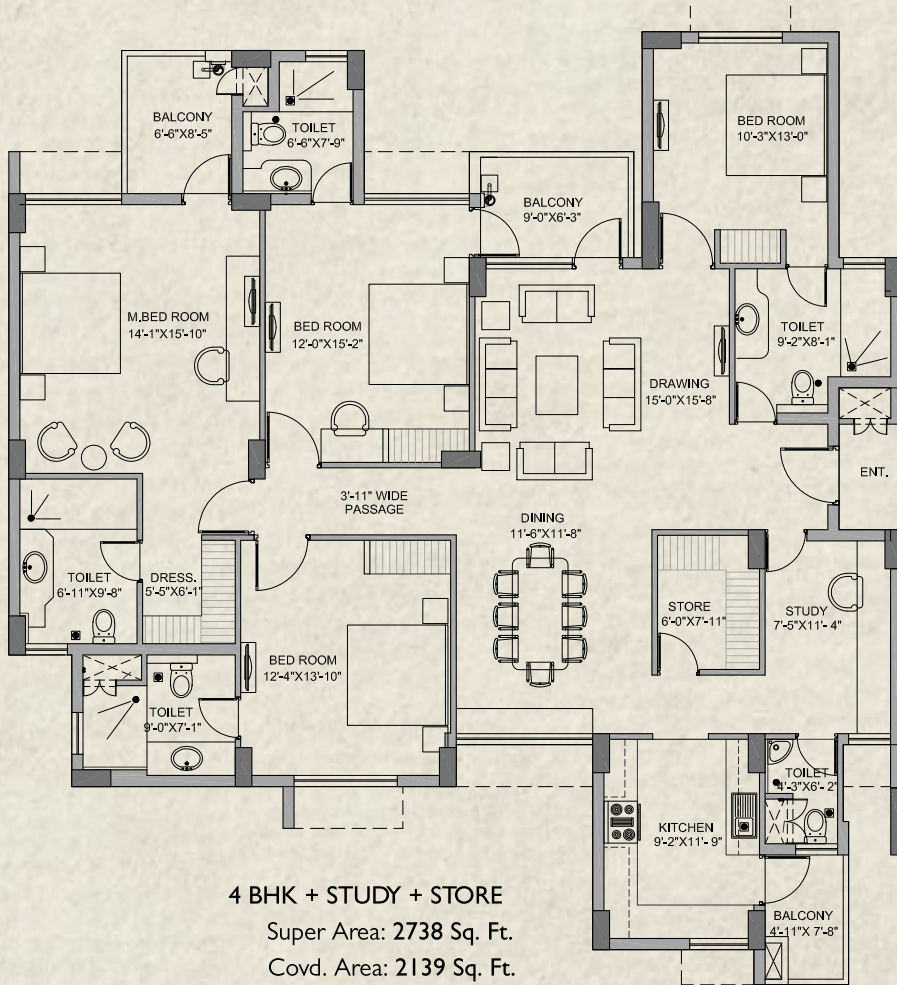


UNIT PLANS

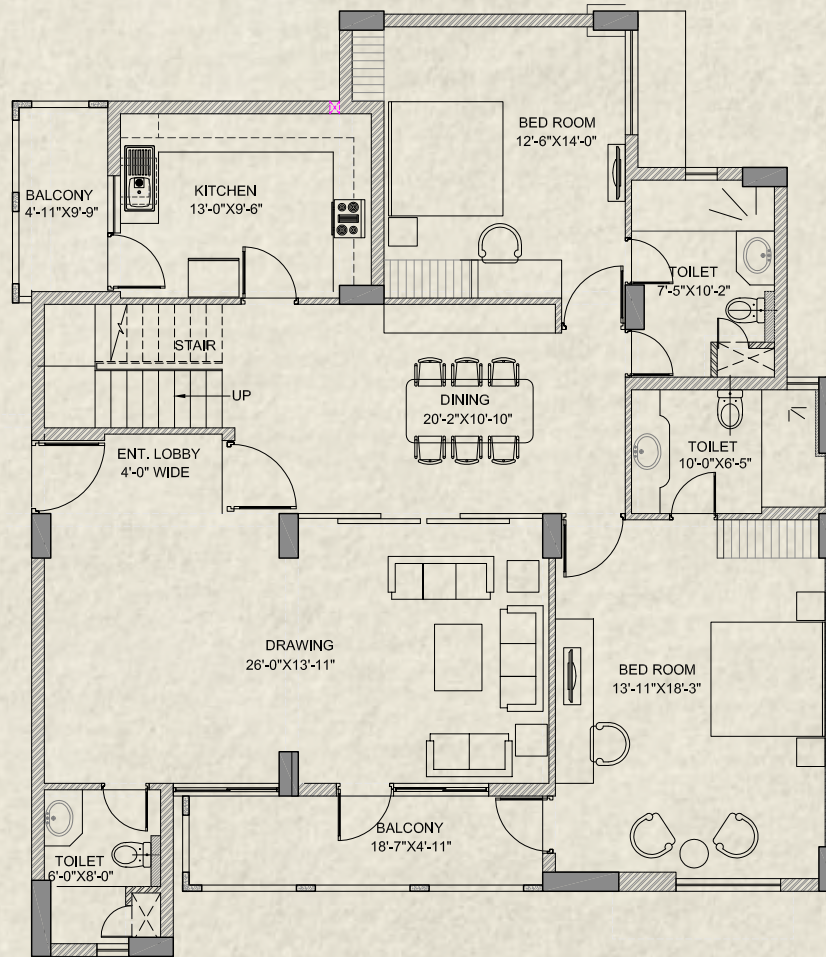


3 BHK + STORE
Super Area: 2227 Sq. Ft.
Covd. Area: 1740 Sq. Ft.

* Dimensions subject to change 1sq. meter = 10.764 sq.feet



PENTHOUSES UNIT PLAN (LOWER LEVEL)



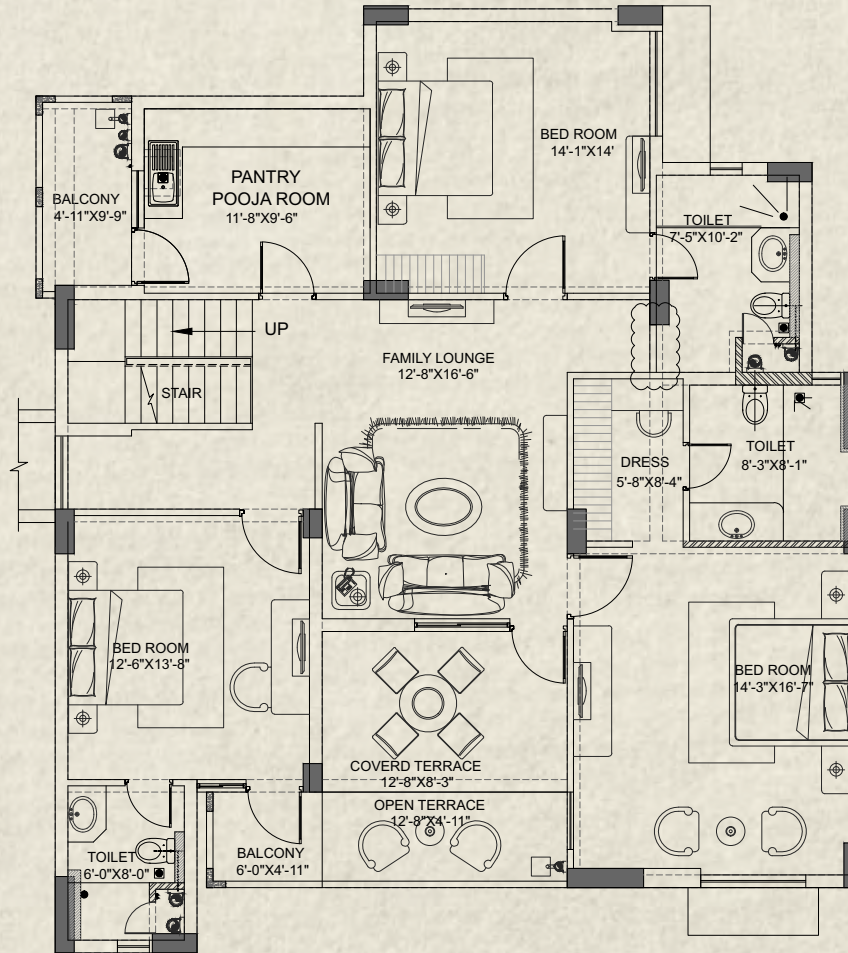
Super Area: 4454 Sq. Ft.

Covd. Area: 3480 Sq. Ft.

INNERVIEW



PENTHOUSES UNIT PLAN (UPPER LEVEL)



* Dimensions subject to change 1sq. meter = 10.764 sq. feet

INNERVIEW



SPECIFICATIONS



FLOORING

Master Bedroom:

Wooden Flooring

Living/ Dining & Bedrooms:

Vitrified Tiles

Toilets:

Ceramic Tiles

Kitchen:

Ceramic Tiles



WALL AND CEILINGS

Internal Wall/Ceiling Finishes:

OBD

External Finishes:

Texture Paint or equivalent

Toilets:

Ceramic/ Glazed Tiles upto 7ft Height

Kitchen:

Ceramic tiles 2ft above counter



DOORS AND WINDOWS

Door Frames:

Seasoned Hard Wood

Door Shutters:

Teak Finish Flush Door/Moulded Panel Door

Windows:

Aluminum Windows



COUNTER

Kitchen:

Granite Stone

Toilet:

Granite Stone



FITTINGS AND FIXTURES

Toilet:

White Sanitary Fixtures with CP Fittings

Kitchen:

Stainless Steel Kitchen Sink

ELECTRICAL FITTINGS

Electrical wiring with copper conductors, conduits, switches and sockets of reputed make

LOCATION MAP



Approximate Distances

- From Greater Noida (west) Gaur Chakkar : 15km
- From Pari Chowk : 4.5km
- From Proposed Metro Station : 1.5km (KPIV)
- From Delhi Public School : 1.5km

Site Address: Plot No:GH-1A, Zeta-I, Greater Noida



The Project is developed jointly by Stellar Ventures Pvt.Ltd (Stellar Group Company) & MI Builders Ltd. (MI Group Company)

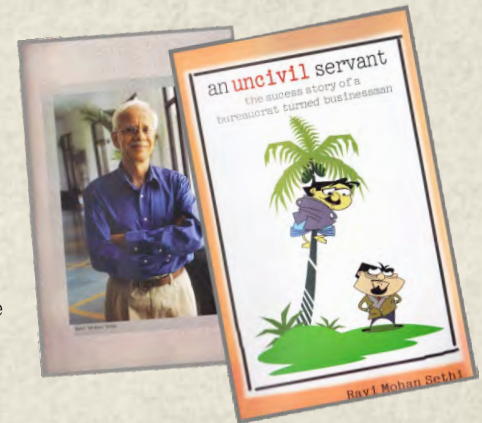


Stellar Group head quartered in Noida NCR has business Interests in Real Estate & Construction, Hospitality, Banking, Information Technology and Edutainment.



CHAIRMAN'S PROFILE

For Ravi Mohan Sethi, 25 years of leadership in IAS was not enough & led to the founding of the Stellar Group. While in Government, Mr. Sethi held key senior positions including MD, Uttar Pradesh Financial Corporation, MD, Pradeshiya Industrial & Investment Corporation of U.P. (PICUP), Secretary, Agriculture UP etc. He was also on the Faculty of the National Academy of Administration, Mussoorie.



(Co-author Ashok Lavasa)



Business Interests in:



REAL ESTATE & CONSTRUCTION:

The Group has developed and constructed over 7 million sq.ft. across residential, commercial and industrial projects.



HOSPITALITY:

The Group owns and operates an exclusive members-only club, a multi cuisine restaurant, and has developed a hospitality management training center in Greater Noida.



INFORMATION TECHNOLOGY:

The Group company specializes in banking and financial services, with its flagship banking product running at over 400 branches of different banks in North India.



EDUTAINMENT:

The Stellar Children's Museum is part of the Stellar Group of Companies and is the member of the Association of Children's Museum(ACM). Museum's Educators have an understanding of the developmental stages and needs of children upto 8 years of age and facilitate inquiry approaches to teaching and learning through play and communication.



Corporate Office: C-56/9, Sector-62, Noida

FOR MORE DETAILS:

Call: 8010097097, 9650003956

info@stellargroupindia.com

WWW.STELLARPROJECTS.IN